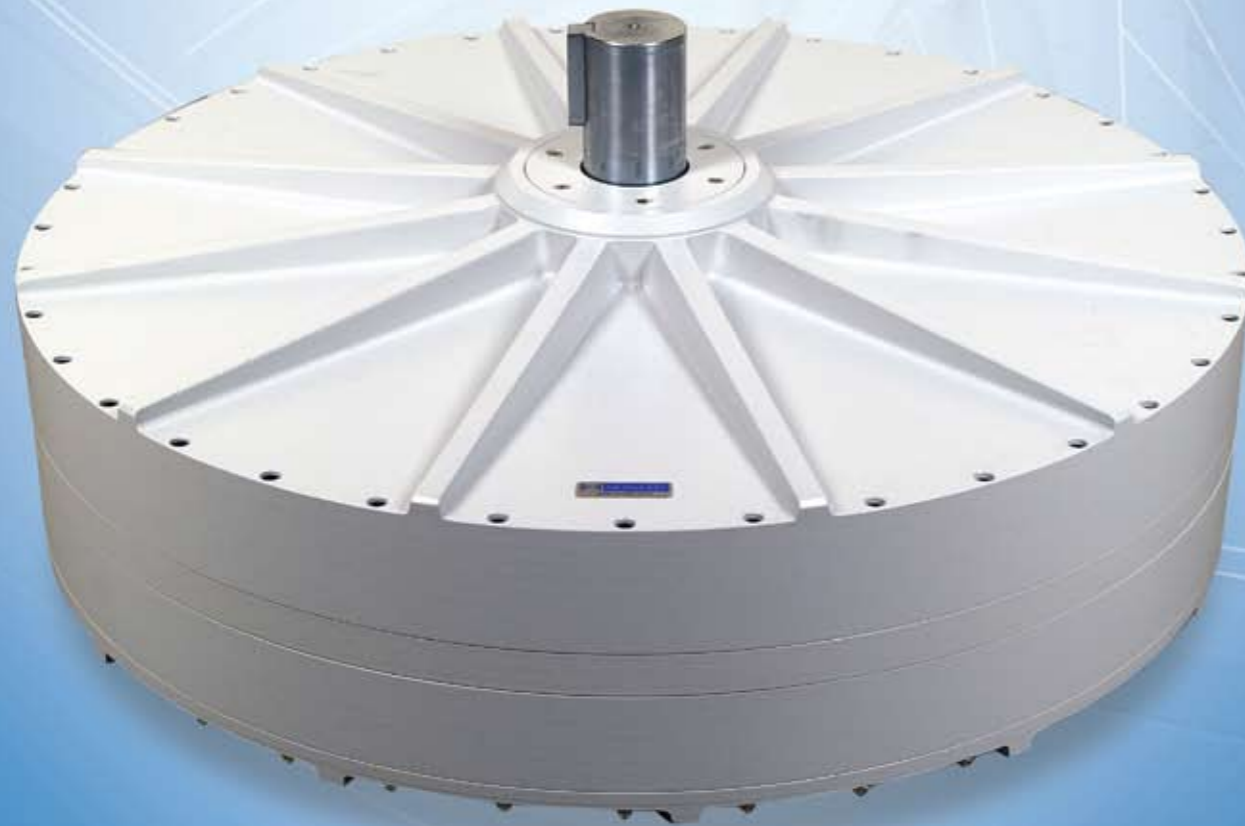
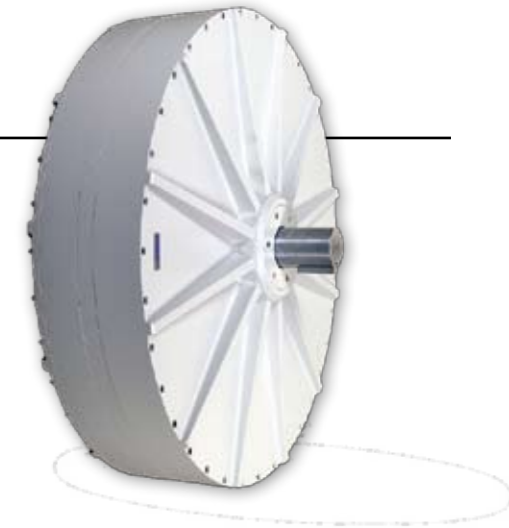


Windro 50kW Generator

Our AFPM generator utilizes our innovative technology. Fully scalable and excellent for large commercial or industrial applications, the 50kW model can be integrated into various producing structures to reduce grid dependency and provide excess power to your generating facility.



Windro -50kW

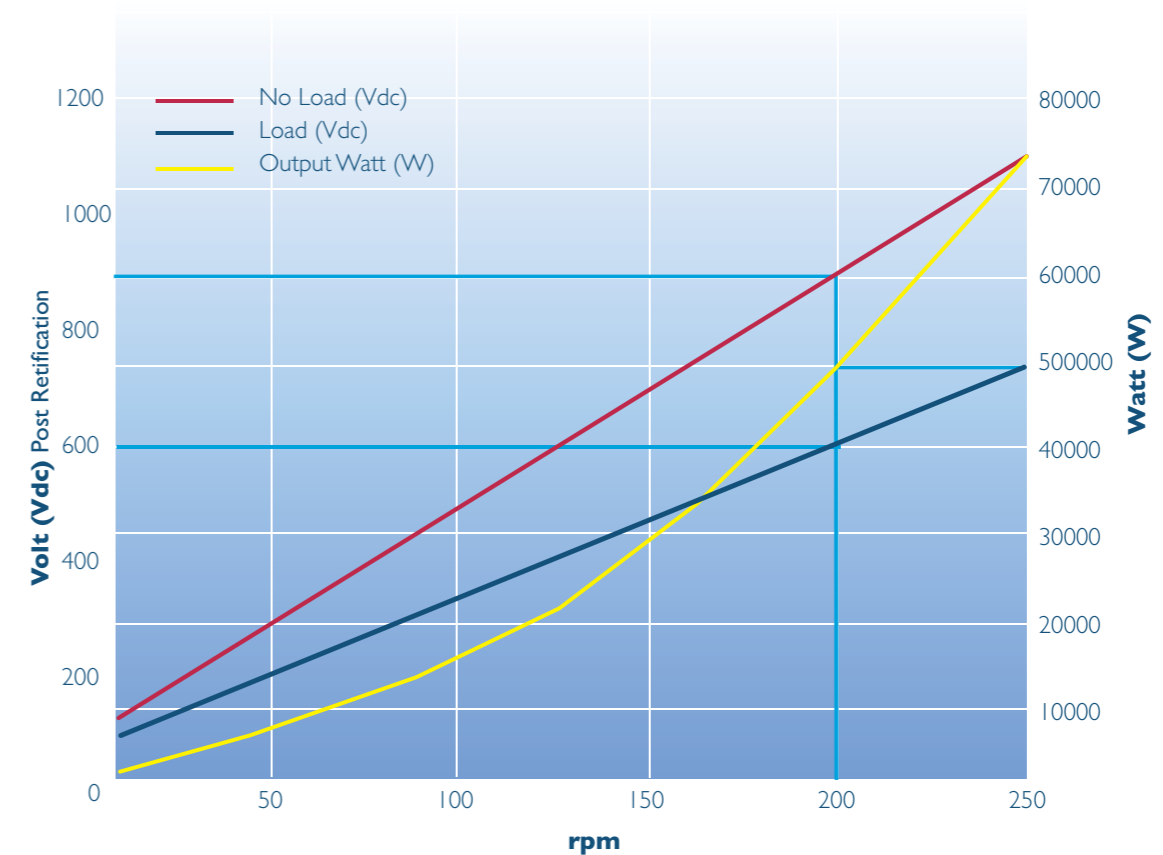


KEY ADVANTAGES

- AFPM technology
- Modular design
- Enhanced efficiency of greater than 90%
- Coreless technology allowing for low cut-in speed
- Elimination of cogging issues

No	Parameter	Metric	Imperial
1	Rated Power	50kW	50kW
2	Rated rpm	200rpm	200rpm
3	Operation Temperature	-20 to 60 °C	-5 to 140 °F
4	Diameter	828mm	32.6 Inches
5	Height	378.4mm	14.9 Inches
6	Weight	299.8kg	661lb

Custom RPM configurations and extended temperature units available



 Registered No.
K1886/L07, K1887/E07
 International
 Application No.
PCT/KR2007/001652