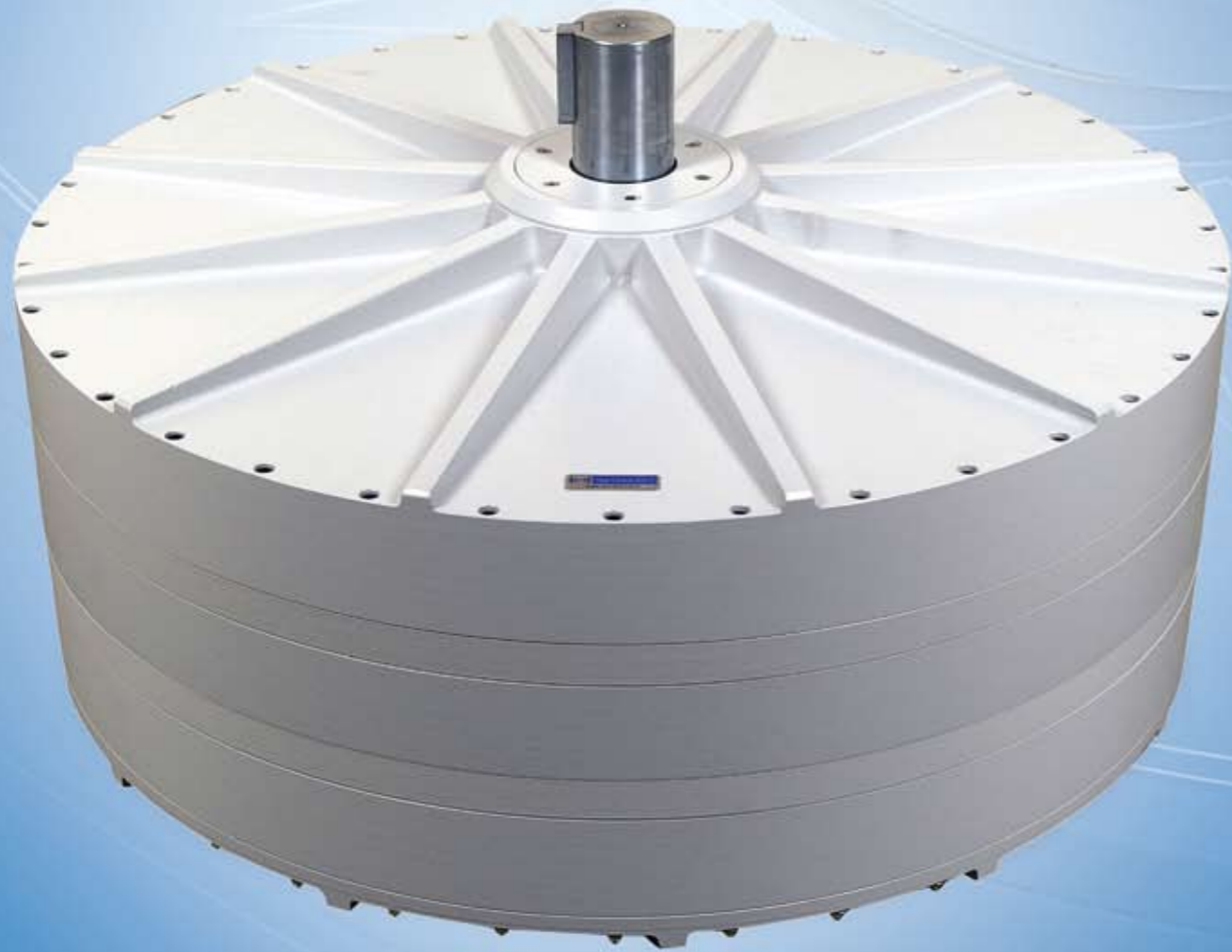


Windro 100kW Generator

Designed using a multi-stator method, the 100kW generator has the benefit of drastically reduced size and lighter weight, resulting in high generator efficiencies. The output is suitable for broad scale power generating facilities.



Windro -100kW

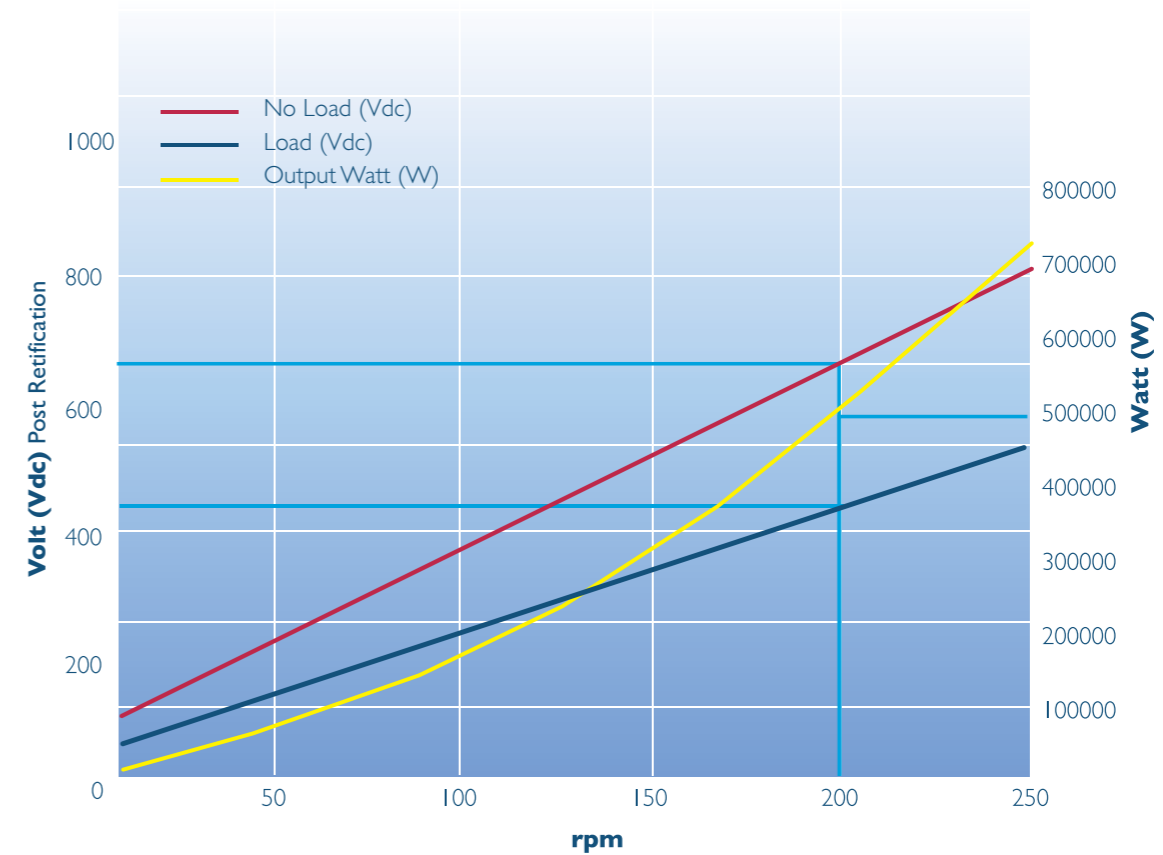


KEY ADVANTAGES

- AFPM technology
- Modular design
- Enhanced efficiency of greater than 90%
- Coreless technology allowing for low cut-in speed
- Elimination of cogging issues

No	Parameter	Metric	Imperial
1	Rated Power	100kW	100kW
2	Rated rpm	200rpm	200rpm
3	Operation Temperature	-20 to 60 °C	-5 to 140 °F
4	Diameter	835mm	32.9 Inches
5	Height	550mm	21.7 Inches
6	Weight	500kg	1,102 lb

Custom RPM configurations and extended temperature units available



 Registered No.
K1886/L07, K1887/E07
 International
 Application No.
PCT/KR2007/001652