

MODEL PV-SCV

SILENT CHECK VALVE



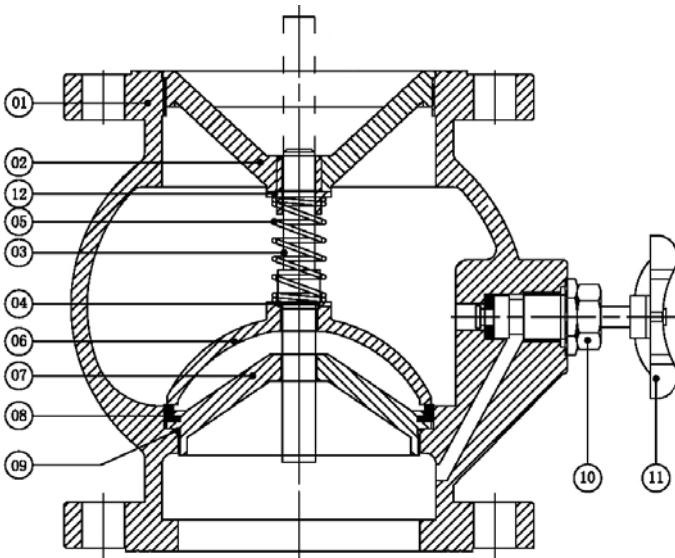
FEATURES

The valves are designed to prevent reverse flow automatically. On pump start-up, the flow of water forces the disc open, allowing the passage of fluid through an area equal to pipe size. On pump shut-down, the special spring closes the disc before a flow reversal takes place. This type of closure, which prevents flow reversal, is the factor which allows silent operation and prevents water hammer normally associated with valve shut-off.

SPECIFICATION

Size : 2"~20" , Flange ANSI Class 150#
 Maximum Working Pressure : 250 psi
 Working Temperature Range : 32°F~175°F

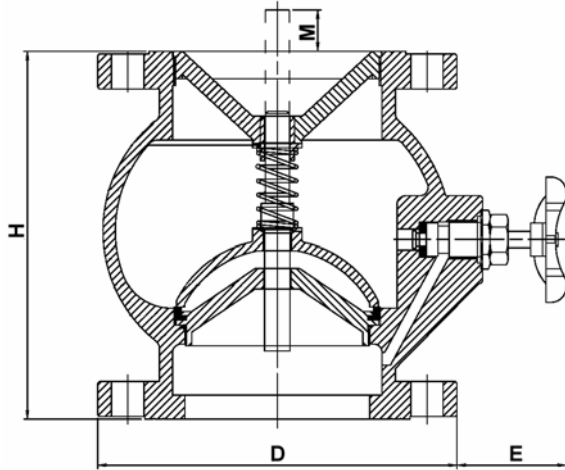
DESCRIPTION & MATERIAL



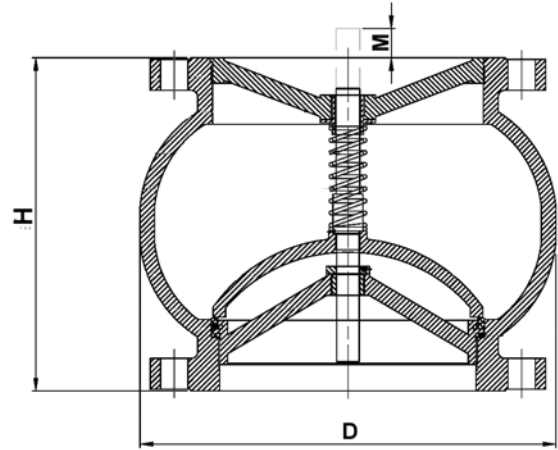
ITEM	DESCRIPTION	MATERIAL
1	Body	Ductile-Iron
2	Upper Seat	Bronze
3	Stem	Brass
4	O-ring	EPDM / Viton
5	Spring	SUS 304 / 316
6	Disc	Bronze
7	Lower Seat	Bronze
8	Soft Seat	EPDM / Viton
9	O-ring	EPDM / Viton
10	Bypass Valve	Brass
11	Handwheel	NYLON
12	Sleeve	Brass

※Other size & materials upon your request.

DIMENSION



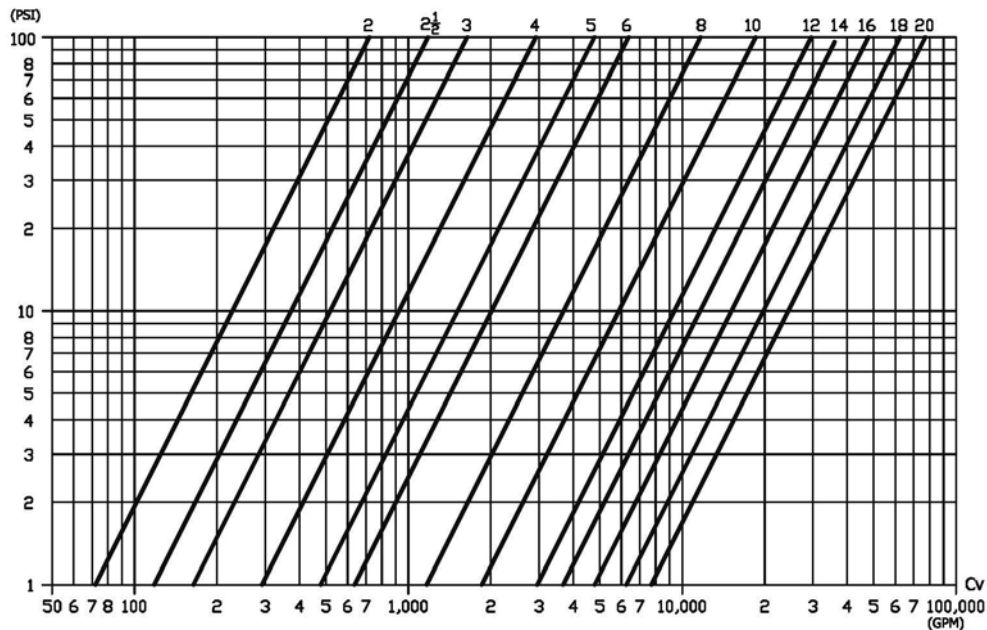
2"~6", Flange 150#ANSI



8"~20", Flange 150#ANSI

SIZE	2"	2 1/2"	3"	4"	5"	6"	8"	10"	12"	14"	16"	18"	20"
D (inch)	6 1/8"	6 7/8"	7 9/32"	8 1/4"	9 7/8"	11"	13 11/16"	15 5/8"	18 3/8"	22 1/16"	25 5/8"	28"	31"
H (inch)	6 3/16"	7 7/8"	8 1/4"	8 11/16"	10 3/32"	11"	11"	12 9/16"	15 3/4"	15 3/4"	17 3/4"	19 9/16"	21 13/16"
E (inch)	2 1/8"	2 9/16"	2 9/16"	2 3/8"	2 9/16"	2 9/16"	---	---	---	---	---	---	---
M (inch)	---	---	---	---	---	3/16"	15/16"	1 11/32"	1 1/2"	3 7/16"	3 7/8"	3 7/8"	4 1/16"
Weight (lbs)	16	27	34	40	55	76	101	152	196	308	463	617	837

PRESSURE DROP DIAGRAM



P.O. Box 271867
 Fort Collins, CO 80527
 TEL: (800) 491-5815
 FAX: (970) 282-4390
 www.proenv.com pec@proenv.com

